

HF, VHF and Satellite Antenna Rotators

Rotators

*Exclusive G-2800DXA
planetary gear system*



 **YAESU**

More Yaesu rotators

For the world's largest selection of rotators made by a major radio manufacturer, just ask for Yaesu.

With seven different models to choose from, we provide rotators and controllers for light-duty VHF/UHF antennas, large HF arrays, and Azimuth-Elevation combinations for satellite application. There is an impressive assortment for virtually every use.

All Yaesu rotators are housed in weatherproof, die-cast

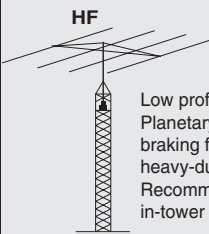
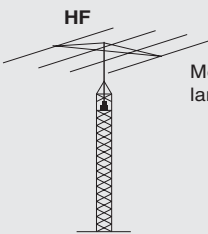
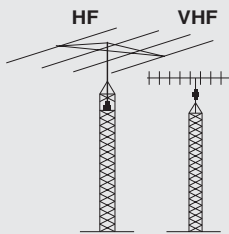
aluminum enclosures and permanently lubricated for years of smooth, quiet operation. Yaesu rotators have a quiet, reliable, gear-reduction braking system. They are developed from our market experience and knowledge of the amateur radio field. Yaesu rotators are compatible with most USA-made antenna tower accessory shelves.

Yaesu has over 50 years of proven excellence in communications manufacturing and performance without compromise. Our rotators are sure to satisfy your needs.

FEATURES:

- 450° tuning radius on azimuth models
- User selectable North or South center
- On models with "DXA/DXC" includes variable speed and preset position controls
- Quiet, gear reduction braking system
- 117 V, 220 V and 220 V (CE)*¹
- Fits most USA-made tower shelves



Models	G-2800DXA* ² G-2800DXC* ²	G-1000DXA* ² G-1000DXC* ²	G-1000A G-1000C	G-800DXA* ²
Recommended Application	 <p>HF</p> <p>Low profile, high torque. Planetary gears improve braking for large arrays; heavy-duty applications. Recommended for in-tower mounting.</p>	 <p>HF</p> <p>Medium/heavy-duty for large HF arrays.</p>		 <p>HF VHF</p>
Wind Load	3 m ²	2.2 m ²	2.2 m ²	2 m ²
K-Factor* ³	950	230	230	180
Stationary Torque	25,000 kg/cm	6,000 kg/cm	6,000 kg/cm	4,000 kg/cm
Rotation Torque	2,500~800 kg/cm	1,100~600 kg/cm	800 kg/cm	1,100~600 kg/cm
Max. Vert. Load	300 kg	200 kg	200 kg	200 kg
Max. Vert. Intermittent Load	1,200 kg	800 kg	800 kg	800 kg
Backlash	0.2°	1°	1°	1°
Mast Size	48~63 φ	38~63 φ	38~63 φ	38~63 φ
360° Rotation Time	50~120 sec	40~100 sec	55 sec	40~100 sec
180° Elevation Time	N/A	N/A	N/A	N/A
Boom Diameter	N/A	N/A	N/A	N/A
Direct control from YAESU HF radio* ⁴	○	○	N/A	○
PC control* ⁵	○	○	N/A	○
Rotator Diameter x Hight	200 φ x 345	186 φ x 300	186 φ x 300	186 φ x 300
Weight	6.5 kg	3.5 kg	3.5 kg	3.5 kg
Cable Requirement	6	6	5	6
Supply AC Voltage	DXA: 117/220 V DXC: 220 V (CE)	DXA: 117/220 V DXC: 220 V (CE)	A: 220 V C: 220 V (CE)	117/220 V

*1: G-1000 A/C and G-650 A/C are 220 V/220 V (CE) only.

*2: On models with "DXA/DXC" suffix, rotation speed and torque will vary with the speed control setting.

*3: K-Factor: Multiply turning radius times weight; add K-Factor for each antenna in "Christmas Tree" installations.

*4: Depending on HF radios, p

*5: Requires optional GS-232B

Optional Accessories



GC-038B/G Mast Clamp (Brown/Green) for G-1000DXA/DXC, G-1000A/C, G-800DXA, G-800SA, G-650A/C, and G-450A/C Rotators



GC-048 Mast Clamp for G-2800DXA/DXC Rotators



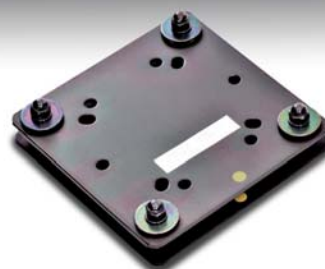
GS-050 Thrust Bearing



GS-065 Thrust Bearing



GS-680U Universal Bearing



GA-3000 Absorber Joint for G-2800DXA/DXC Rotators



GA-2500 Absorber Joint for G-1000DXA/DXC, G-1000A/C, G-800DXA, G-800SA, G-650A/C, and G-450A/C Rotators



GS-232B Computer Controller for all DXA/DXC Series and G-5500 Rotators



GL-33 Mast Adjustment Plate

Control Cables

- 40 m Control cable with Connector
- 25 m Control cable with Connector

About this brochure: we have made this brochure as comprehensive and factual as possible. We reserve the right, however, to make changes at any time in equipment, optional accessories, specifications, model numbers, and availability. Some accessories shown herein may not be available in some countries. Some information may have been updated since the time of printing; please check with your Authorized Yaesu Dealer for complete details.

YAESU
Amateur Radio Division of Vertex Standard

VERTEX STANDARD CO., LTD. <http://www.vxstd.com>

4-8-8 Nakameguro, Meguro-ku, Tokyo 153-8644, Japan

VERTEX STANDARD USA <http://www.vertexstandard.com>

US Headquarters 10900 Walker Street, Cypress, CA 90630, U.S.A.

YAESU UK LTD. <http://www.yaesu.co.uk>

Unit 12, Sun Valley Business Park, Winnall Close
Winchester, Hampshire, SO23 0LB, U.K.

VERTEX STANDARD HK LTD. <http://www.vxstd.com.hk>

Unit 1306-1308, 13F., Millennium City 2, 378 Kwun Tong Road,
Kwun Tong, Kowloon, Hong Kong

VERTEX STANDARD AUSTRALIA PTY., LTD.

10 Wesley Court BURWOOD EAST VIC 3151, Australia <http://www.vxstd.com.au>

